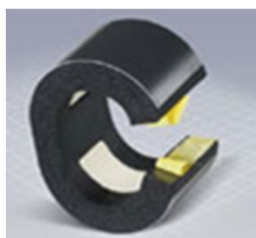


Armafix AF Rohrträger

Preise gültig ab 1. April 2012 exkl. MwSt.
Preisänderungen vorbehalten

Armafix AF Rohrträger

DSD	Code	Rohr Aussen- Ø mm Kupfer	Rohr Aussen- Ø mm Stahl	Ø-Schlauch	max. zul. Abstand	AD mm	Stk/Krt	CHF/Stk
AF-2	FX-2-10/12	10/12	10.2/13.5	10/12	2.00 m	34/36/38	32	9.20
AF-2	FX-2-15/18	15/18	17.2	15/18	2.00/2.25 m	40/43	32	9.30
AF-2	FX-2-22/25	22/25	21.3/25	22/25	2.75 m	47/50	32	10.60
AF-2	FX-2-28/30	28/30	26.9/30	28/30	3.00 m	53/56	32	11.90
AF-2	FX-2-35/38	35/38	33.7/38	35/38	3.50 m	61/65	28	12.85
AF-2	FX-2-42/45	42	42.4/44.5	42/45	3.75 m	69/72	28	13.00
AF-2	FX-2-48		48.3	48	4.25 m	76	28	13.60
AF-2	FX-2-54/57	54/57	54/57	54/57	4.25 m	82/85	28	14.00
AF-2	FX-2-60/64	64	60.3/63.5	60/64	4.75 m	89/92	24	17.40
AF-2	FX-2-70	(70)	70	70	4.75 m	98	24	17.50
AF-2	FX-2-76/80	76.1/(80)	76.1	76/80	5.50 m	105/109	20	19.10
AF-2	FX-2-89	88.9	88.9	89	6.00 m	118	16	22.20
AF-2	FX-2-102/108	108	101.6/108	102/108	6.00 m	134/141	16	23.35
AF-2	FX-2-110/114	114	114.3	114	6.00 m	144	12	27.25
AF-2	FX-2-125	125	125	125	6.00 m	158	12	27.55
AF-2	FX-2-133/140		133/139.7	133/140	6.00 m	165/172	12	31.60
AF-2	FX-2-160	160	159	160	6.00 m	193	9	34.00
AF-2	FX-2-165/168		165.1/168.3	Platte	6.00 m	198/201	9	34.85
AF-4(3)	FX-4(3)-10/12	10/12	10.2/13.5	10/12	2.00 m	46/48/50	28	10.25
AF-4(3)	FX-4(3)-15/18	15/18	17.2	15/18	2.00/2.25 m	52/55	28	10.55
AF-4(3)	FX-4(3)-22/25	22/25	21.3/25	22/25	2.75 m	60/64	28	11.55
AF-4(3)	FX-4(3)-28/30	28/30	26.9/30	28/30	3.00 m	66/70	28	13.60
AF-4(3)	FX-4(3)-35/38	35/38	33.7/38	35/38	3.50 m	74/79	24	14.95
AF-4(3)	FX-4(3)-42/45	42	42.4/44.5	42/45	3.75 m	85/88	24	15.25
AF-4(3)	FX-4(3)-48		48.3	48	4.25 m	91	24	15.90
AF-4(3)	FX-4(3)-54/57	54/57	54/57	54/57	4.25 m	98/101	24	16.60
AF-4(3)	FX-4(3)-60/64	64	60.3/63.5	60/64	4.75 m	105/109	20	20.45
AF-4(3)	FX-4(3)-70	(70)	70	70	4.75 m	116	20	20.90
AF-4(3)	FX-4(3)-76/80	76.1/(80)	76.1	76/80	5.50 m	122/127	16	24.00
AF-4(3)	FX-4(3)-89	88.9	88.9	89	6.00 m	136	12	28.55
AF-4(3)	FX-4(3)-102/108	108	101.6/108	102/108	6.00 m	149/156	12	30.90
AF-4(3)	FX-4(3)-110/114	114	114.3	110/114	6.00 m	162	12	35.00
AF-4(3)	FX-4(3)-125	125	125	125	6.00 m	173	12	36.65
AF-4(3)	FX-4(3)-133/140		133/139.7	130/140	6.00 m	183/189	12	41.15
AF-4(3)	FX-4(3)-160	160	159	160	6.00 m	210	6	44.80
AF-4(3)	FX-4(3)-165/168		165.1/168.3	Platte	6.00 m	216/219	6	45.20
AF-4(3)	FX-4(3)-204		210	Platte	6.00 m	255	4	67.45
AF-4(3)	FX-4(3)-216/219		216/219.1	Platte	6.00 m	267/270	4	67.55
AF-4(3)	FX-4(3)-254		250	Platte	6.00 m	305	3	72.65
AF-4(3)	FX-4(3)-267/273		267/273	Platte	6.00 m	318/324	3	80.20
AF-4(3)	FX-4(3)-306		300	Platte	6.00 m	357	1	84.45



Armafix AF Rohrträger

Preise gültig ab 1. April 2012 exkl. MwSt.
Preisänderungen vorbehalten

Armafix AF Rohrträger

DSD	Code	Rohr Aussen- Ø mm Kupfer	Rohr Aussen- Ø mm Stahl	Ø-Schlauch	max. zul. Abstand	AD mm	Stk/Krt	CHF/Stk
AF-4(3)	FX-4(3)-324		323.9	Platte	4.50 m	375	1	86.15
AF-4(3)	FX-4(3)-356		355.6	Platte	4.20 m	407	6	90.75
AF-4(3)	FX-4(3)-406		406.4	Platte	4.00 m	457	6	97.45
AF-4(3)	FX-4(3)-457			Platte	3.70 m	508	4	100.20
AF-4(3)	FX-4(3)-508		508	Platte	3.40 m	559	4	115.75
AF-4(3)	FX-4(3)-610		610	Platte	2.90 m	661	2	130.05
AF-6	FX-6-15/18	15/18	17.2	15/18	2.00/2.25 m	74/77	20	14.10
AF-6	FX-6-22/25	22/25	21.3/25	22/25	2.75 m	80/84	20	15.35
AF-6	FX-6-28/30	28/30	26.9/30	28/30	3.00 m	91/95	20	17.40
AF-6	FX-6-35/38	35/38	33.7/38	35/38	3.50 m	104/109	16	19.85
AF-6	FX-6-42/45	42	42.4/44.5	42/45	3.75 m	113/116	16	21.00
AF-6	FX-6-48		48.3	48	4.25 m	119	16	22.70
AF-6	FX-6-54/57	54/57	54/57	54/57	4.25 m	126/129	16	23.85
AF-6	FX-6-60/64	64	60.3/63.5	60/64	4.75 m	134/137	12	29.40
AF-6	FX-6-70	(70)	70	70	4.75 m	144	12	30.25
AF-6	FX-6-76/80	76.1/(80)	76.1	76/80	5.50 m	152/156	12	34.60
AF-6	FX-6-89	88.9	88.9	89	6.00 m	167	12	41.10
AF-6	FX-4(3)-102/108	108	101.6/108	102/108	6.00 m	179/188	12	45.00
AF-6	FX-6-110/114	114	114.3	110/114	6.00 m	196	12	53.50
AF-6	FX-6-125	125	125	125	6.00 m	207	12	54.90
AF-6	FX-6-133/140		133/139.7	133/140	6.00 m	219/225	8	64.55
AF-6	FX-6-160	160	159	160	6.00 m	248	6	70.50
AF-6	FX-6-165/168	165/168	165.1/168.3	Platte	6.00 m	254/257	5	84.15
AF-6	FX-6-204		204	Platte	6.00 m	305	3	124.45
AF-6	FX-6-216/219		216/219.1	Platte	6.00 m	317/320	1	129.25
AF-6	FX-6-254		250	Platte	6.00 m	355	1	141.10
AF-6	FX-6-267/273		267/263	Platte	6.00 m	368/374	1	153.80
AF-6	FX-6-306		306	Platte	6.00 m	407	6	177.90
AF-6	FX-6-324		323.9	Platte	4.50 m	425	6	184.60
AF-6	FX-6-356		355.6	Platte	4.20 m	457	6	194.45
AF-6	FX-6-406		406.4	Platte	4.20 m	507	2	207.45
AF-6	FX-6-457			Platte	3.70 m	558	2	221.90
AF-6	FX-6-508		508	Platte	3.40 m	609	2	249.10
AF-6	FX-6-610		610	Platte	2.90 m	711	2	276.00

Technische Daten

Wasserdampfsperwert AF-2 und AF-4(3) > 10000 μ

Wasserdampfsperwert AF-6 > 7000 μ

Einsatztemperatur -50°C bis +105°C

Wärmeleitfähigkeit 0°C = 0.033W/mK (AF-2 und AF-4(3))

Wärmeleitfähigkeit 0°C = 0.036W/mK (AF-6)